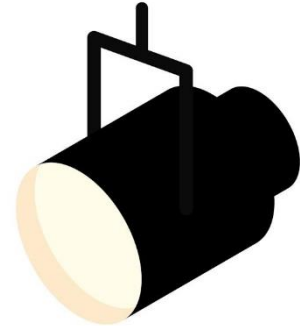


Welcome to the Autumn Term 2023 Careers Leader Newsletter

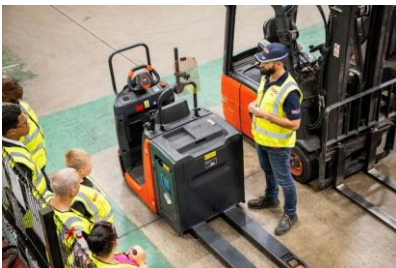
Spotlight Story - Solutions Library

Getting stuck on the Gatsby Benchmarks and not sure where to turn? Don't forget the [Benchmark Resources | LLEP Solutions Library](#) is filled with resources and quick wins to remove Benchmark barriers! From templates to contact lists, find ideas you need in just a few clicks.

The library is broken down by Benchmark and contains many of the Careers Hub offers, including the SDSA Careers modules, LMI resources, and contacts for provider encounters. We will continue to update the solutions with the newest offers so don't forget to keep checking back!



[CLICK HERE to check out the resources](#)



Are you having Careers Conversations?

As part of a series of projects called 'We Discover' and funded by The Careers and Enterprise Company, Careers Conversations aim to unearth innovative projects that remove barriers around careers.

The goal is to familiarise parents and carers with local labour market information particularly in growth areas such as Green, Logistics and Digital.

We'd like to thank the generous businesses involved in this project: Holovis (digital), BSS (logistics) and Intelligent Energy (green) who have worked with 4 schools across Leicester and Leicestershire this past academic year.

These businesses have helped us to:

1. Create content to communicate directly into the homes across the region to support those spontaneous conversations.
2. Work with teachers to bring careers into the curriculum.
3. Invite parents and their young people out to see behind the gates of their workplaces.

To date over 800 parents and carers of students in yr9 have been reached through direct communications, with over 20 families attending VIP visits to employer premises in the region.

We look forward to continuing with the project this autumn to engage more parents and young people with local employers.



Build Your Business, Build Our Future

This is the strapline for South Charnwood United Business Alliance (SCUBA) as it aims to strengthen relationships between businesses in its local community, as well as providing the opportunity to build links with school.

As a school, they're aware that they're educating the 'workforce of the future' and want to work together with local businesses to ensure their young people have the right skills and attributes for the world of work. In partnership, businesses can help pupils with their post 16 career pathways by supporting events such as careers speed networking and 'Meet the Employer' activities.

South Charnwood High School tells us "All local businesses, big or small, are most welcome to join our SCUBA network which is organised by our Year 10 and 11 business ambassadors to help 'build your business; build our future'".

[CLICK HERE to learn more about SCUBA](#)

National Interview Week 4th-8th December



[Oppidan Education](#) and [YourGamePlan](#) have partnered to deliver the first ever National Interview Week, a programme that will deliver 5,000 free interview sessions this Autumn Term for students in Year 12.

[CLICK HERE to view the flyer](#)

Sir Thomas White Loan Charity



When considering careers provision, how much emphasis is placed on entrepreneurship in your school? Leicestershire is supported with grant provision from the Sir Thomas White Loan Charity and grants can be used to help set up businesses or even support further study.

[CLICK HERE to learn more.](#)

Dates for your Diary!

We've compiled some key dates that'll support your role as a careers leader this academic year.

[CLICK HERE to download](#)

Aug	Sept	Oct	Nov	Dec	Jan	Feb	Mar	Apr	May	June	July

Continuing Activity:

- Consider entry points on 16th your PA.
- Ask your EC about 16+ hours support from the LEAP Co-ops this term to ensure you have appropriate quality CPD benchmarks.
- Request a meeting with your EC for targeted support to meet Quality Benchmarks.
- Check your calendar against the attached dates calendar.

Save the Dates!



City and County College and 6th Form Open Days have now been published.

You'll want to share this with your students!

[Check out the list here](#)



College partnership Shortlisted for Leicestershire Business Award

A project to deliver hydrogen skills for automotive and logistics businesses has been shortlisted as part of a regional awards scheme.

North Warwickshire and South Leicestershire College (NWSLC) which leads the Hyve project alongside its partners SMB College Group, Leicester College, and Loughborough College will compete against organisations including Menphys, Leicester Riders, and design agency, Creative62 for the East Midlands Chamber 'Excellence in Collaboration' trophy.

[LEARN ABOUT The HYVE Project here](#)

SPEAKERS
for schools

Ready to draw
inspiration &
rewrite their
future?

DISCOVER!
creative careers

13th - 17th
November 2023

Speakers for Schools DISCOVER! Creative Careers Week

A full week (**13th November to 17th November**) of a range of opportunities and experiences for schools/colleges and individual students to engage with creative industry leaders and experts.

[CLICK HERE for the week's schedule](#)

[CLICK HERE for the Parent & Carer Evening online event](#)

My Uni-verse

Most school students have anxieties and questions about university life.

My Uni-verse is a peer support channel dedicated to helping every student, whatever their background, overcome those anxieties through informative videos from current students.

So every student can feel confident in their higher education decision and career.

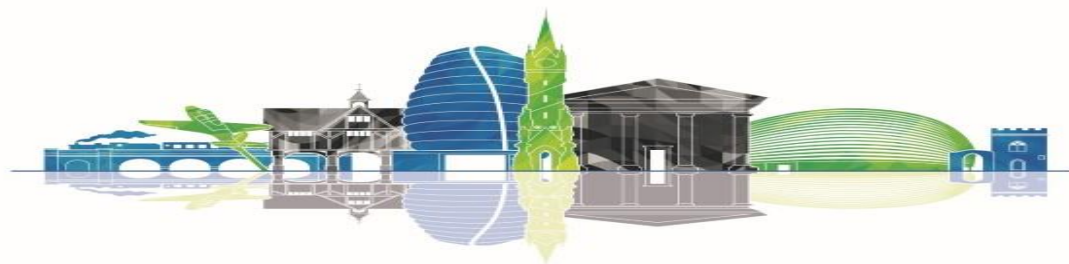


[CLICK THE LINK to the YouTube Channel here.](#)

Find an archive of previous Schools and LLEP Newsletters on the LLEP website



LLEP social media



You are receiving this update as you have opted in to receive information from the Leicester and Leicestershire Enterprise Partnership Limited (LLEP). You can amend the information we send you by updating your [Marketing Preferences](#) or [Unsubscribe](#) at any time.

The LLEP is committed to protecting your personal information. Please view our [Privacy Policy](#)

All information accurate at the date of sending.
For more information about this update contact: admin@llep.org.uk 0116 454 2917
Leicester and Leicestershire Enterprise Partnership Limited (LLEP)
Postal Address: City Hall, 115 Charles Street, Leicester, LE1 1FZ
Company Registration: 11932434

[You can unsubscribe for good here](#)