

Leicester and Leicestershire Skills Advisory Panel

Winter 2023 update

The Skills Advisory Panel (SAP) is a body comprised of the LLEP, and representatives from local FE Colleges, Universities, Schools, Business, Voluntary and Community Sector. SAPs have been responsible for producing Local Skills Reports and producing a local evidence base of information.

LLEP partnership with Microsoft

The LLEP area has been selected to pilot a national Microsoft **business support programme**, building on previous partnership work to support digital skills

- Small business resource centre <https://aka.ms/LEPSMB>
- Business consultations <https://aka.ms/LEPConsultation>
- More free offers to follow later in 2023

The LLEP previous made a range of employability resources available locally via Microsoft's Get On initiative:

[LLEP works with Microsoft to address local skills gaps | LLEP](#)

Over 800 local people have accessed the links since becoming available in summer 2022, by far the highest of any partner on the scheme.

Leicestershire Innovation Festival 2023

- Runs February 6 -24
- Skills support event February 16 – business webinar
- Full **programme of events**:

<https://bizgateway.org.uk/innovation/leicestershire-innovation-festival-2023/>



Inclusion

The LLEP will be involved in **two forthcoming** events:

- Cost of Living (April 18 2023, to support businesses)
- Inclusive recruitment (aimed at helping employers to understand how they can recruit from a wider pool). This event will look at the value of knowledge, skills and behaviour and how businesses can remove barriers to applicants. The event is due to be help in the summer.

SAPs and Local Skills Improvement Plans (LSIPs)

East Midlands Chamber are leading the LLEP LSIP. Project work has commenced and includes:

- Further **development of data**, work with stakeholders, parents and young people around what is useful, and enhancing dashboards visuals
- **Expansion from three to seven sectors**, possibly including construction with green and digital being considered as cross-cutting. Sector panels will be formed.

Gareth Thomas of the IoD has been commissioned by LLEP to support alignment of the LSIP and SAP, to support the skills ecosystem effectively. See the LSIP dashboard here: [Collective Intelligence Skills Observatory \(insight-unlocked.co.uk\)](https://insight-unlocked.co.uk)

Short term ambitions from the LSIP trailblazer to be met in 2023 include:

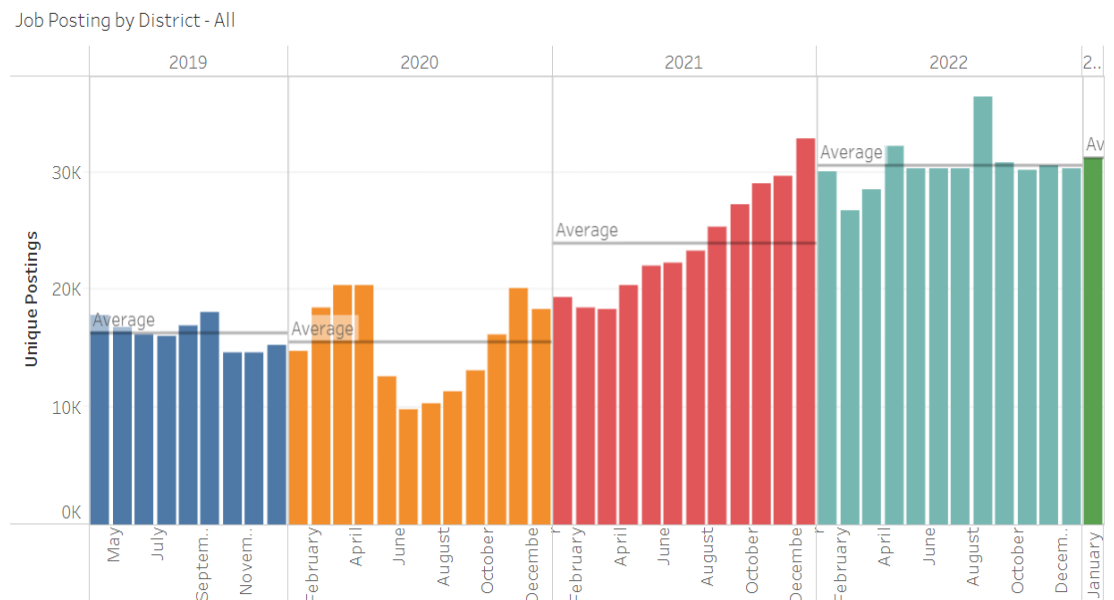
- Creating an **employer-led Local Skills Accountability Framework and Board** for Leicester and Leicestershire
- Ensure a **comprehensive vision** for the LLEP area economy is understood and supported
- Coordinate ERBs to develop a local **engagement toolkit** to help employers get involved with the skills system (this could link to enhancing the LLEP Building the Workforce guide)
- Create a Local **Continuing Professional Development Framework** for Leicester and Leicestershire educators

The LSIP work in Leicestershire is seen as a national exemplar of local partnership working as all local stakeholders are pulling together to make the programme a success.

Local data

Job Postings

Local advertised job postings remain high (circa 30,000) across the LLEP area. Skills shortages continue to be reported across all sectors, including professional services, care, logistics, digital, manufacturing and engineering.



LLEP Digital Skills Partnership

De Montfort University now leading the partnership for next 2 years. Work will include:
A new unique model, led by HE

- Pathways in Digital – T Levels, Apprenticeships, Bootcamps, Short Courses
- Leading a UK3C Cyber Cluster
- Engagement with all local partners across public and private sector
- Convening initiatives linked to the LSIP, Careers Hub, Made Smarter and Create Growth
- Developing a Digital Toolkit for business
- Landing place for Employers, Learners, and Ambassadors
- Use the Microsoft pilot to create a blueprint for more suppliers to join in
- Increasing a pool of unbiased Digital Ambassadors

This will be shared with DCMS in a bid for official Digital Skills Partnership status

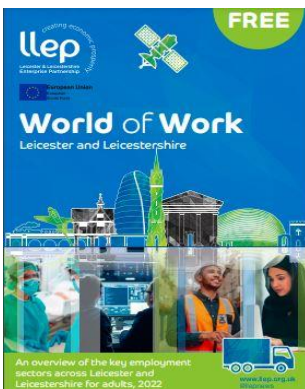
Digital Inclusion

The LLEP funded seven projects to support those digitally excluded from 2021 onwards; all continue to deliver positive results. **Reaching People** continue to coordinate the **Refurb IT** offer - a total of 230 devices (phones, tablets, laptops) collected, 155 devices refurbished and donated so far.

Other large projects are also starting to deliver results with **WEA** seeing 42 learners during the autumn term and more courses planned during spring. We are awaiting figures from other providers such as the **Highfield** centre who report they are also doing well.

Reaching People are still looking for device donations from both individuals and business as demand for the devices is high. **Do you have IT equipment that you no longer use or need?** Find out more, see: [ReFurb IT](#)

LLEP World of Work Leicestershire 2023 resource for adults



This **annual skills resource** is created for partners that support **adults into work**; 4,000 copies will be cascaded across the LLEP area, created by the skills team to increase awareness of the local world of work, including:

- Key sectors, skills in demand
- Overview of Enterprise Zones
- What employers want
- Working for SMEs
- Starting a business

The guide is currently being updated ready for print in February 2023

LLEP Apprenticeship update

Following on from apprenticeships and technical education transitions workshop at the October Skills Advisory Panel, the LLEP skills and Careers Hub team are working on:

- Support for schools to invite more skills and training providers in to meet **Provider Access Legislation (PAL)** needs <https://bit.ly/3ySopPh>
- Actions to support apprenticeships via the LLEP **Education-Business Links** group and the LLEP **Apprenticeship Strategy** <https://llep.org.uk/app/uploads/2022/02/LLEP-Apprenticeship-Strategy-2022.pdf>

A new easy-use **apprenticeship data summary** is also now available:

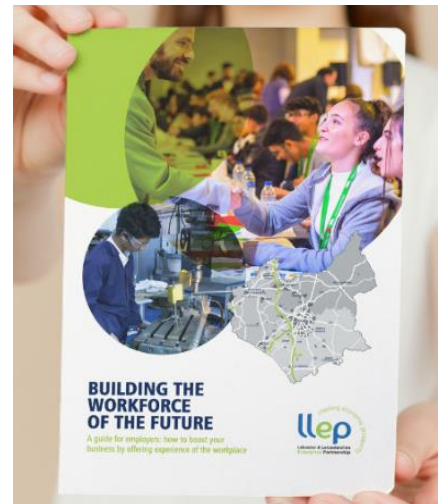
<https://llep.org.uk/app/uploads/2023/01/LLEP-Area-Apprenticeship-Data-2021-2022.pdf>

Building the Workforce of the Future

This updated snapshot guide, with local case studies, brings together typical business skills challenges and shows how offers like **apprenticeships, T Levels, work experience and work placements** can address them and bring **business benefits**.

This supports wider aims to make skills offers clearer and more accessible to area employers, to encourage wider take up.

The guide was created in partnership with area universities, colleges, DWP, Business Gateway Growth Hub, Careers Hub, and other skills Partners, see: <https://llep.org.uk/buildingtheworkforce/>



Encouraging Start Ups

The LLEP has been working with **Leicester Startups** to create a summary snapshot for young people and adults to consider starting a business. This has been embedded onto the LLEP web pages for young people and adults, with more activity to follow to support entrepreneurship.

<https://llep.org.uk/app/uploads/2023/01/Start-a-business-Jan-2023.pdf>

For further information about the SAP, or suggestions of other information you would like to see, please contact: Stewart.smith@llep.org.uk or Anna.cyhan@llep.org.uk

The Careers Hub plays a key role locally in linking businesses to local schools and colleges to help increase knowledge of key area sectors and different career paths.

The first Careers Hub project to use LSIP data is completed, using CEC Data Accelerator funding to support LSIP data accessibility for teachers and young people. Work includes:

- [District profiles \(based on the LLEP skills district snapshots\)](#)
- Explainer videos of Knowledge, Skills, Behaviors and the LSIP, see: [What are the skills required by employers? - YouTube](#)

The We Discover Project are a set of research projects delivered by the Careers Hub to evaluate innovative approaches or specific challenges related to good careers education for young people

We Discover – Apprenticeships

Phase one 2021/22

- Increasing the number of local Apprenticeship Ambassadors available to schools, currently 15
- A parental engagement pilot using weekly 'conversation starters' with their children to discover more about career options, apprenticeships, and T Levels together.

Phase two 2022/23

- Unbox Your Future*, flexible, hybrid work experience programme, delivered by Apprentice Ambassadors.

We Discover – Effective Transitions

- A two-year research project looking at the barriers young people with SEND face in transitioning to their next steps
- A CEC funded SEND [labour market platform](#) launched in November 2022.

We Discover – Careers Conversations

- Delivering targeted support for parents and carers to encourage them to use and understand Labour Market Information and increase their confidence in supporting their young people with exploring workplace experiences in three key sectors – logistics, digital and green.
- A collaborative project with Hull and East Yorkshire LEP.

We Discover Life Sciences - Teacher Encounters

- A professional development day for STEM Teachers at Charnwood Enterprise Zone to raise the profile of this key LLEP sector with STEM teachers and connectivity with employers.

Additional Projects

- **Future Influencers** is collaboration with HQ CAN (Community Arts Network) and De Montfort University. Young people will learn to produce professional digital portfolio with music composed and video content directed by them to secure workplace experiences.
- ***Unbox your Future** A new blended work experience project. Apprentices Ambassadors and Leicester College Key Accounts are trialling this. It is currently being tested with SEND schools and Cornerstone Employers.
- **EAL project – sector awareness** to students with English as an additional language.

For further information about the activities of the Careers Hub, please contact Gerarde.Manley@llep.org.uk