

Leicester and Leicestershire Skills Advisory Panel

Summer 2022 update

The Skills Advisory Panel (SAP) is a body comprised of the LLEP, and representatives from local FE Colleges, Universities, Schools, Business, Voluntary and Community Sector. SAPs have been responsible for producing Local Skills Reports and producing a local evidence base of information.

New LLEP skills reports

Three new reports have been released by the LLEP to increase understanding of the local labour market and skills landscape:

- [The Economy of Leicester and Leicestershire 2022](#)
 - The report includes data about local sectors, industry size and growth, and skills demands
- [Future Workforce of Leicestershire](#)
 - Demographic research undertaken by DMU to consider the size and composition of local workforce in the next decade
- [Updated postings dashboard](#)
 - Interactive dashboards to show the volume of local job vacancies by district and job type.

Future of SAPs and Local Skills Improvement Plans (LSIPs)

Local partners will be hearing more about LSIPs in the coming months as the government rolls out the programme nationally after a successful pilot phase. The LLEP area was a Trailblazer area and expected to be one of the first national programmes, scheduled to start in autumn 2022.

LSIPs will be led by Employer Representative Groups with a mandate to engage more closely with employers about the skills issues in the local area. Having supported the pilot, the SAP are committed to ensuring the LSIP becomes an effective part of the local skills ecosystem, to maximise the impact of all support work in a coherent local system.

The first project to use LSIP data is now underway. This uses external funding to consider fresh ways of making the data and information understandable for teachers and young people, including short videos through the LLEP Careers Hub.

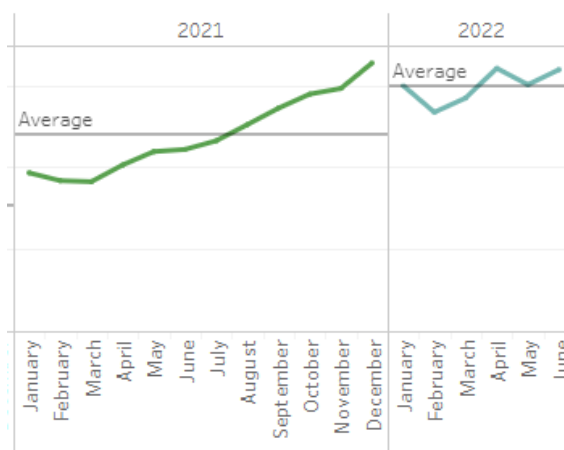
[Collective Intelligence Skills Observatory \(insight-unlocked.co.uk\)](https://insight-unlocked.co.uk)

Local data

Job Postings

Local job postings have risen in June after a small dip in May. Numbers are now nearing the recent peak of December 2021 after a small fall earlier in 2022. The end of June figure was 31,920.

Anecdotally, several well-informed local partners are reporting skills shortages across all jobs and all sectors, including professional services, manufacturing and engineering.



Top 10 Job Titles in LLEP Area - 2022

| | |
|---------------------------|-------|
| Warehouse Operatives | 8,319 |
| Support Workers | 5,290 |
| Unclassified | 4,704 |
| Care Assistants | 3,802 |
| Staff Nurses | 3,446 |
| Production Operatives | 3,150 |
| Cleaners | 2,627 |
| Maintenance Engineers | 2,096 |
| Health Care Assistants | 1,981 |
| Customer Service Advisors | 1,858 |

Job Types

The top job titles advertised locally demonstrate the ongoing demand for workers to support the local logistics boom. The size of the local manufacturing sector is also apparent along with several roles related to Health and Social Care.

Other SAP updates

Digital Skills Partnership

- Funds have been allocated locally to drive forward the local Digital Skills Partnership with an agreement being finalised with a local partner.
- Digital Inclusion – the LLEP have funded seven local projects. A regional Digital Inclusion roundtable is being planned for the autumn.

Microsoft have made a batch of employability resources available for local partners, please contact the LLEP for further information.



Leicester and Leicestershire Careers Hub update

The Careers Hub play a key role locally in linking businesses to local schools and colleges to help increase knowledge of the local labour market and different career paths.

The Careers Hub commissioned and have recently received an independent evaluation of its activities. The report highlighted the excellent work of the local Careers Hub alongside with several recommendations including:

- Convening multiple and varied providers to work on local activities and challenges
- Increase support for providing students with experiences of the workplace
- Help schools and colleges engage better with parents

The Careers Hub have brought in around £250k in funding in the past year to fund a variety of innovative projects in the LLEP area. Current projects include:

We Discover - SEND (Special Educational Needs and Disabilities) post 16 transitions research project.

We Discover – Apprenticeships

- A drive to increase the number of local Apprenticeship Ambassadors available to schools that is already showing results
- A parental engagement pilot using weekly 'conversation starters' with their children to discuss and discover more about jobs and education options/apprenticeships and T Levels together. The data for this has informed the larger scale We Discover – Careers Conversations pilot below

We Discover – Careers Conversations

- Delivering *targeted engagement and support for parents and carers to encourage them to use and understand Labour Market Information and increase their confidence in supporting their young people with exploring workplace experiences in key sectors*

Data Accelerator

- The previously mentioned project to make LSIP data more accessible to schools and young people particularly looking at the knowledge, skills and behaviours the initial sectors the LSIP targeted.

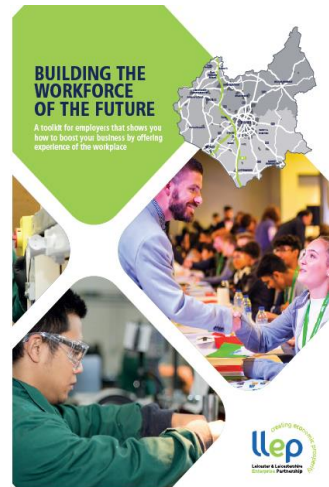
For further information about the activities of the Careers Hub, please contact Gerarde.Manley@llep.org.uk

Building the Workforce of the Future

The employer toolkit: Building the Workforce of the Future, is now being updated.

Our LLEP snapshot toolkit has all the information employers need, whatever their size, to offer employer encounters, work experience and work placements to benefit local businesses.

The LLEP are currently consulting with local partners to update this resource over the summer with a target launch of autumn 2022.



**** Update ****

LLEP Skills Plan 2022-24

The LLEP Skills Plan 2022-24 will be published by the end of July. The plan will consider the current skills landscape, external influences and skills needs of the future. The plan will be available on the LLEP website and partners will be alerted when available.

For further information about the SAP, or if you have suggestions of other information you would like to see, please contact:

Stewart.smith@llep.org.uk

Anna.cyhan@llep.org.uk