

ANNUAL REPORT

April 2020 - March 2021



Leading, Delivering and Supporting Economic Recovery



CONTENTS

Foreword from the Chair	3
-------------------------	---

Section one | Leading the Way 5

Strategy	5
Local Skills Report	6
Freeport	7
MIT REAP (Massachusetts Institute of Technology Regional Entrepreneurship Acceleration Programme)	8
Leading the Way to Zero Carbon	9

Section two | Delivering Results 10

European Structural Investment Funds (ESIF)	10
Local Growth Fund	11
• Leicester North-West Major Transport Scheme (A50/A6)	11
• Leicester Strategic Flood Risk Management Strategy	11
• Commercial Workspace Pioneer Park	11
• National Space Centre Vision 2025	12
• Space Park Leicester	12
• M1 Junction 23	12
Getting Building Fund	13
• Case study – St. Margaret's Gateway	14
Growing Places Fund	15
• Case Study – The Gresham	15
Enterprise Zones	16
• LUSEP	16
• MIRA Technology Park	16
• Space Park Leicester	16
• Pioneer Park	16
Business Gateway Growth Hub	17
Careers Hub and Enterprise Adviser Network	18



Section 3 | Supporting Recovery 19

Response to Redundancy Service	19
World of Work Leicestershire	19
Labour Market and Employability Films	20
Apprenticeships	21
Business and Economic Intelligence Updates	21
Business Tracker Survey	22
New LLEP Website	23
Governance	23
Annual Accounts	24
LLEP Board of Directors	25



FOREWORD

from the Chair

On behalf of the Leicester and Leicestershire Enterprise Partnership, I would like to welcome you to this year's annual report entitled '**Leading, delivering and supporting economic recovery**'. Inside you will find a review of the wide-ranging activity undertaken by the LLEP, that demonstrates our positive economic impact during the 2020-2021 financial year.

This was a year like no other. We have seen everyone - not just the business community - coming to terms with a global pandemic that created an unprecedented situation and disruption, to people's lives and businesses of all sizes, for a prolonged period.

As a Local Enterprise Partnership we led the development of a high-level Covid-19 Economic Recovery Action Plan for Leicester and Leicestershire. The plan identifies the short-term interventions to be implemented by the LLEP and its partners during 2021. We've allocated £1.6m additional LLEP funding to support key priorities. The plan has a particular focus on jobs and skills, including digital and green technology skills, supporting business recovery and increasing innovation across the industrial spectrum.

We have continued with our major investment programmes and seen great progress at Leicester Waterside, Space Park Leicester, M1 Junction 23 improvements and The Gresham.

We have supported the development and delivery of the MIRA Technology Park Enterprise Zone and the Loughborough and Leicester Science and Innovation Enterprise Zone. Advances in earth observation, low carbon vehicles and life sciences continue to demonstrate the area's capacity for innovation.



The Business Gateway Growth Hub saw a 200% increase in demand for its service at the beginning of the pandemic. As the one-stop-shop for business support in the city and county the team of business advisers have received 3,656 direct enquiries for help during the period and offered 1:1 advice, business diagnostics, access to finance, information and advice on EU transition, webinar support and signposting to a wide range of other services and help.

We are one of six Local Enterprise Partnerships to participate in the UK Pilot of the MIT REAP* Programme. The involvement of MIT REAP provided



Kevin Harris

the expertise, resource and support to enable us to work towards the ambition of driving up productivity by helping us to develop a local innovation ecosystem framework that will address some of the issues within the local economy.

Despite the enormous impact of Covid-19, the LLEP has a vision that our region will become one of the most productive economies in England with **healthy growth, healthy people and healthy businesses.**

We will continue to challenge our thinking, lead the drive to be a top performing innovative county and ensure we are globally significant as a major transport and logistics hub for UK plc.

Chair of the LLEP Board of Directors



** Massachusetts Institute of Technology (MIT) – Regional Entrepreneurship Acceleration Programme (REAP)*

Leading The Way

Strategy

The impact of the Covid-19 pandemic has been felt throughout the Leicester and Leicestershire economy. In response to these unprecedented events, we took the lead in economic recovery planning to address the impact of Covid-19 and shape the economic future of Leicester and Leicestershire.

Through the Local Resilience Forum, we have led on the development of plans for our short and long-term economic recovery and growth.

The Economic Recovery Cell, formed of key stakeholders and chaired by the LLEP, developed a three-stage framework for Economic Recovery Planning:

①

Analyse economic shock



After conducting the initial analysis of the economic shock to the region, we produced the Covid-19 Economic Recovery Action Plan in December 2020. This plan sets out priority actions for recovery during 2021 and will be implemented by the LLEP and our partners to mitigate against the immediate impact of Covid-19.

The plan was developed using available economic data and focuses on business and employment support. It recognises where there are opportunities to 'build back better' and respond to emerging local and national priorities.

②

Create short-term economic recovery plans



In January 2021, we set about the task of producing a long-term Economic Growth Strategy to address the economic needs of our region. The strategy will incorporate the ambitions contained within our draft Local Industrial Strategy, together with those priorities and opportunities emerging from the current crisis. Our Draft Evidence Review was the first stage to be completed in developing the long-term strategy, and has been published on our website.

[Economic Recovery Strategy Draft Evidence Review](#)

③

Develop longer term economic growth strategy



Local Skills Report



We published our [LLEP Local Skills Report](#) in March 2021. A requirement of all Local Enterprise Partnerships' Skills Advisory Panels (SAPs), our Local Skills Report is a high-level document that sets out the current skills landscape in Leicester and Leicestershire. It focuses on where there is need for specific skills in specific sectors and outlines the existing skills strengths of the region that businesses can capitalise on when looking to recruit.

A healthy local economy demands a skilled local workforce, and this report outlines how those

demands can be fulfilled. Strategies include supporting disadvantaged groups to gain qualifications; reskilling existing workers; and working with schools and colleges to ensure young people enter the world of work with the skills required to succeed.

The Local Skills Report goes hand-in-hand with our Economic Growth Strategy. Therefore, underpinning the report are four 'golden threads' identified by our SAP. They are:

Place.

Ensuring that our skills strategy is tailored to the unique needs of Leicester and Leicestershire.

1

Ensuring a **green recovery**, and accelerating carbon reduction and clean growth.

2

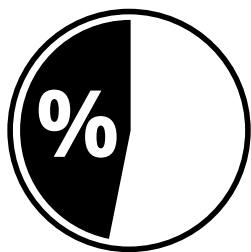
Digital infrastructure, skills and transformation.

3

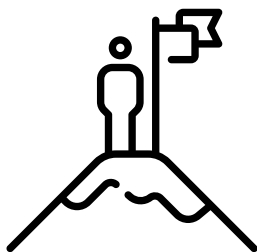
Inclusive growth and well-being to ensure a fair recovery.

4

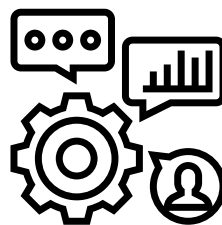
Furthermore, our SAP has agreed that the focus for skills to rebuild our economy over the coming years must be on improving digital literacy; apprenticeships and training; inclusive skills and employment; skills transfer through innovation and collaboration; young people; and pathways to future jobs.



45% of all advertised vacancies in the past twelve months were in Leicester, and 55% in Leicestershire.



The **top most advertised** roles were: logistics (warehouse) and drivers, health and social care, software and programming, and sales.



The **top most requested** general skill in adverts is communication skills.



The **top three** apprenticeships offered by employers are business administration, engineering and manufacturing, and health and social care.

Freeport



In March 2021 the government announced that the East Midlands will be host to one of eight new Freeports in England, creating an estimated 60,000 new skilled jobs for the region.

Based around the East Midlands Airport and Gateway Industrial Cluster (EMAGIC) in North West Leicestershire, the Ratcliffe-on-Soar power station site in Rushcliffe in Nottinghamshire and the East Midlands Intermodal Park (EMIP) in South Derbyshire, the Freeport will bring significant investment to develop and drive innovation, alternative energy sources and green technology supporting SMEs and large regional employers, including Rolls-Royce, Toyota, and Alstom.

The East Midlands Freeport bid was submitted in February 2021 by a consortium led by the D2N2 Local Enterprise Partnership and ourselves. It included private sector businesses and local authorities, with support from universities, business groups, local MPs and the proposed East Midlands Development Corporation.

The sites' central and strategic location will provide employment and skills opportunities across the East Midlands and strengthen connectivity across the wider Midlands region to stimulate investment and develop and grow our industrial strengths in advanced manufacturing, automotive and logistics.



At the heart of the plans are opportunities to accelerate the region's commitment to decarbonisation and boost the area's status as a leading innovation hub for green energy supporting SMEs and large regional employers.

The geographic location of our region, and the high levels of entrenched expertise in the fields of logistics and import/export found here, made the East Midlands an obvious choice for the location of a Freeport.



MIT REAP

Massachusetts Institute of Technology (MIT) Regional Entrepreneurship Acceleration Programme (REAP)

We were one of only six Local Enterprise Partnerships selected to take part in the UK pilot of the MIT REAP programme. Engagement with MIT delivered an evidence-based, practical approach to strengthening innovation in our area, and developing an innovation ecosystem framework to address some of the issues within the local economy. The innovation framework will build collaborations, growth and opportunities to safeguard the future prosperity and productivity of our businesses, workforce and communities.

The LLEP MIT group undertook extensive surveys and interviews with entrepreneurs and stakeholders, in-depth economic analysis and stakeholder mapping as part of the programme working to the MIT model.

Early actions include:

- Formation of the LLEP's Innovation Board. This has brought together senior leaders from academia and the public and private sectors for the creation of a long-term Innovation Strategy for Leicestershire.
- An initial year-long programme of engagement and support to deliver greater innovation, research and development in Leicester and Leicestershire.
- An understanding of the future needs and culture of businesses that are innovating across the city and county.
- Proof-of-concept initiative relating to changing the culture to risk and innovation within established SMEs.

The research work undertaken by the MIT REAP Steering Group and development of the 'Beacons and Bootstraps' strategy provided up-to-date intelligence, with the recommendations factored into our Economic Recovery Plan.



Leading the Way to Zero Carbon



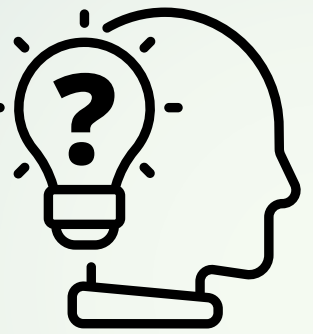
In March 2021, we became the first Local Enterprise Partnership in the country to achieve a bronze level Carbon Literate Organisation accreditation from The Carbon Literacy Project.

The LLEP's employees, along with members of our Board of Directors, undertook a comprehensive training course on carbon reduction and the climate emergency.

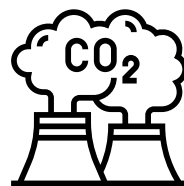
Carbon Literate Organisation
Bronze



Did you know?



Driving one mile in the average car emits 530g of carbon, whilst a one-hour Zoom meeting has a carbon footprint of just 10g. Some of the changes we've made to our working habits this past year could be long-term green solutions.



Earlier this year, our Board of Directors committed to supporting the Climate Emergency Declarations made locally and nationally.

Gaining accreditation as a Carbon Literate Organisation will allow us to support local businesses to address their own carbon footprints and take the necessary steps toward achieving net-zero carbon emissions.

The Business Gateway began working on a series of webinars for small businesses called "Zero Carbon for your small business" in order to raise awareness of what is set to be the major issue of the next two decades, and something that all businesses need to be aware of. We recognise that it is better for businesses to get ahead of the curve and put plans in place now, than to wait for the legislation that will inevitably penalise those that were slow to act.

Delivering Results

European Structural and Investment Funds (ESIF)

Our £118.5m ESIF programme delivery continues but no further local calls under the ESIF programme were made this financial year. Instead any future funding opportunities were launched nationally as part of the government's Reserve Fund and overall post COVID-19 economic recovery plans.

In September 2020, the European Social Fund Managing Authority launched a £10m Digital Inclusion Call under the Reserve Fund. This funding was aimed

at existing projects only, to help them provide much needed laptops to their clients to help them continue to be supported through remote contact.

We produced a booklet with an up to date overview of our local ESIF Programme to highlight some of the projects and activities being delivered. Through 35 European Regional Development Fund projects that support businesses and 23 European Social Fund projects that support skills development, we have invested £104.5m into the local economy.

①

**Supported over
5,744 businesses**



②

**Created over
2,000 jobs**



③

**Helped around
2,600 people gain
employment**



④

**Assisted 5,400
people in
gaining a
qualification**



⑤

**Released an additional
£12m of private
investment into
the local community**



Local Growth Fund



In 2020/21, we supported the delivery of six projects with our remaining Local Growth Fund (LGF) allocation of £17.89 million. This was the final allocation from the original £126 million. Two thirds of the funding (£11.92 million) was released in May 2020,

with the remaining allocation subject to review later in the year. After positive performance across all projects, the final third of funding was released in September 2020.

The projects are as follows:

Leicester North-West Major Transport Scheme (A50/A6)

- £1.95 million (allocated from the full £16.2 million)
- A multi-million-pound improvement scheme designed to meet Leicester and Leicestershire's future transport needs.

Project outcomes:

- New or resurfaced roads – 6.4km;
- New or improved cycleways – 16.2km;
- New or improved footways – 4.5km;
- Pedestrian crossing facilities – 53;
- A marked reduction in accidents.

Commercial Workspace Pioneer Park

- £2.06 million (allocated from the full £2.614 million)
- This ambitious next phase of development at Leicester's Pioneer Park builds on the success of 'Dock' by providing additional and much needed innovation facilities.

Project outcomes:

- Creation of new office and commercial workspace – 2453m²;
- Jobs created or safeguarded – 200;
- Private sector leverage – £5m;
- Development of graduate-level jobs and links with higher education; Improved GVA and jobs growth

Leicester Strategic Flood Risk Management Strategy

- £2.02 million (allocated from the full £7.5 million)
- A series of inter-connected projects to provide green infrastructure improvements along the River Soar and Grand Union Canal corridor.

Project outcomes:

- New cycleways – 1.30km;
- Homes safeguarded from flooding – 1,852;
- Improved footway – 7.8km;
- Savings by reducing flood damage – £55m





Local Growth Fund

National Space Centre Vision 2025

- £654,000 (allocated from the full £1.149 million)
- Our allocation of LGF funding underpins Leicester's status as a globally recognised "space city," a reputation that will be further enhanced as Space Park Leicester comes online, with the National Space Centre at its heart.
- The funding has created an extension that delivers new workspace and flexible facilities for exhibitions, workshops and corporate events as part of the development plans of this major visitor attraction.

Project outcomes:

- 37 jobs created or safeguarded;
- 30,000 additional family visitors per annum;
- 7,200 additional school visitors per annum;
- 1050m² of refurbished commercial floorspace;
- 16,000 students in workshops

M1 Junction 23

- £7.35 million (allocated from the full £12 million)
- This project will deliver junction and road improvements to the M1 at Junction J23 / A512 increasing capacity and easing congestion, and unlocking land for housing and commercial development

Project outcomes:

- New homes – 4,000;
- New jobs – 5,700;
- New roads – 3.675km;
- Widening of the A512 between M1 J23 and the waste transfer site;
- 5km of cumulative dualling east and west of J23.

Space Park Leicester

- £3.85 million (allocated from the full £8.175 million)
- Space Park Leicester is a landmark international initiative to create a world-leading cluster for innovative research, enterprise and education in space, earth observation and space-enabled sectors.

Project outcomes:

- 4800m² of commercial floorspace;
- 220 jobs; 14 business start-ups;
- four inward investors;
- 125 businesses supported.



Getting Building Fund

In June 2020, we received a £20 million allocation from the Government's Getting Building Fund, which we have allocated to four key infrastructure projects.

All four projects were "shovel-ready," and within

our existing project pipeline. They are in line with economic priorities and will help contribute to the post-Covid economic recovery.

The projects are as follows:

St. Margaret's Gateway

A regeneration project at one of the key access points to Leicester focused on the rebuilding of St Margaret's Bus Station and refurbishment of the surrounding streets.

£10.5 million allocation.

SportPark Pavilion 4

An ambitious project to complete Loughborough University's SportPark development with a 2,000 m² extension.

£6 million allocation.

M1 junction 23 and A512 improvements

An upgrade of single carriageway road to dual carriageway and the remodelling of five junctions on the A512, along with further improvements to the motorway junction. This is additional funding to accelerate delivery of the next phase following our earlier LGF investment and will create 889 new direct jobs and unlocked a further 2,600 housing units.

£1.8 million allocation

Granby Street/St George Street Regeneration Gateway

A project to encourage more people to walk and cycle in Leicester by improving the facilities for sustainable transport.

£1.7 million allocation.



CASE STUDY: St. Margaret's Gateway



St. Margaret's Gateway focuses on the rebuilding of St Margaret's Bus Station and refurbishment of the surrounding streets as part of a major scheme to regenerate this part of Leicester city centre.

The new carbon neutral bus station is believed to be the first to be built to net-zero carbon standards in the UK. Passengers will benefit from a completely redesigned and improved internal layout with a new café, better seating and real time digital passenger information.

The new design will include LED lighting, mechanical ventilation with heat recovery, air source heat pumps and 750 m² of solar panels, which will generate enough energy to power the station and feed extra energy back into the grid.

There will also be increased capacity for national and regional bus services with the number of bus bays increasing from 18 to 24. Electric bus charging points will be installed, and the new building will feature secure storage for up to 150 bikes.

Improvements to footpaths and roads surrounding the bus station will see better facilities for pedestrians and cyclists, new landscaping and tree planting, and safer crossings to soften the impact of the ring road. The entire project is designed to encourage people to make sustainable transport choices and cut down congestion on Leicester's inner ring road.



Growing Place Fund

The Growing Places Fund (GPF) has provided **over £17 million** in loans to 11 schemes in Leicester and Leicestershire, with a balance of £6.8m remaining to invest at the end of March 2021.

In October 2020 the LLEP board agreed to repurpose some GPF funding. A total of **£1.6million** was made available for economic recovery investment in response to the Covid-19 pandemic.

Themes for this investment were agreed by the board of Directors and the following investment proposals have been developed thus far:

• Employment and Skills fund	£500k
• Digital Skills Partnership:	£90k
• Digital Poverty	£300k
• NEET Prevention	£100k
• Business Grants	£300k
• SME Kickstart extension:	£500k
• MIT REAP seed corn delivery	£100k
• Low Carbon delivery	£100k

CASE STUDY: The Gresham



We provided a GPF loan of £4 million to support the redevelopment of the former Fenwick's department store on Market Street, Leicester.

The loan has been used to convert the former department store into serviced apartments (an 'aparthotel') and co-working business space with associated facilities and four new dynamic commercial units. The building is now known as 'The Gresham,' in a nod to its original name when it was first opened in the 1880s.

The Gresham will feature a 121 bedroom aparthotel with a hotel lobby bar, onsite restaurant and gym, and with four ground floor and basement commercial units totaling nearly 1,050m². The state-of-the-art co-working space is more than 1,100m² and has been pre let to Leicester City Council for 25 years.

Our decision to award a £4 million GPF loan was in line with our commitment to kick-starting projects that will have a significant impact on employment and investment in Leicester and Leicestershire.



Enterprise Zones

MIRA Technology Park Enterprise Zone

Britishvolt, the UK's foremost investor in advanced battery technologies announced their intention to site their new global headquarters at MIRA Technology Park (MTP). The new facility will spearhead the development of battery technologies for future electrified vehicles.

MTP also announced a partnership that will see a new centre of engineering excellence located at the site. The partnership with REE Automotive (REE) will help accelerate its REEcorner and electric vehicle (EV) technology. The company plans a £66.2 million investment in the site over the next three years, creating 200 high-skilled jobs in the region.

Loughborough and Leicester Science and Innovation Enterprise Zone

LUSEP

The Loughborough University Science and Enterprise Park (LUSEP) was successful in securing funding from the historical business rates for the Restocking the Business Base Project. It will support individuals with low employment prospects and equip them with the

skills needed to establish new businesses that are 'fit for the future': agile, focused on emerging markets and committed to scaleup and growth.

Space Park Leicester

Phase One of Space Park Leicester's construction neared completion by March 2021, with the keys handed over to the University of Leicester by contractors Bowmer + Kirkland in April 2021. The project will deliver a 4,800m² facility comprising offices, shared laboratories, teaching facilities and co-working spaces, focusing primarily on research, development and applications of space.

Pioneer Park

The first tenants moved into Dock 2, an extension of the successful Dock managed workspace at Pioneer Park in Leicester's development. Dock 2 offers light industrial workspace and office accommodation in 16 individual units, ranging in size from 75-168m², for new businesses or those already based at Dock and looking to expand.



Business Gateway Growth Hub



From March 2020, the Business Gateway rapidly mobilised to support businesses during the pandemic. The switch to virtual delivery saw a 200% increase in the number of business enquiries. From April 2020 the Business Gateway received 3656 enquiries, just under half of the all enquiries received since its formation in October 2014.

Government Covid-19 business grants were delivered by the Business Gateway. The Small Business Recovery Grants and Covid Kick Start Grants amounted to £1.2m. This funding package was in addition to the Business Gateway's growth grant offer.

The Business Gateway undertook the creation of a series of Peer Networks (cohorts), to focus on reducing the UK productivity gap by helping business leaders find practical solutions to strategic and operational challenges. A total of 147 business owners and managers from the SME business community participated in each network. Led by an experienced facilitator, these peer networks delivered 18 hours of action learning across seven industrial sectors plus a high growth cohort.

The entire Business Gateway event programme migrated to online delivery and created a programme of sectoral webinars in addition to recovery specific and general business growth programmes.

Key activities delivered by the Business Gateway include:

- Enabled a swift response to the emerging needs of businesses via the Business Resilience Programme
- Launched the Covid-19 Small Business Recovery Grant attracting 250 applications
- Supported businesses with EU transition advice
- Delivered a diverse range of business support programmes for those sectors severely affected by Covid-19 such as hospitality, tourism, retail, food and drink manufacturing and textiles manufacturing
- Delivered a Start-Up Accelerator programme for business start-ups
- Delivered a digital transformation support programme for businesses

3,656

enquiries
received for
business
support - up

212%

on the
previous
year

202

webinars
delivered
with

3,398

attendees

£384,000

Business Gateway
Growth Grants allocated
to

27

businesses



Careers Hub and Enterprise Adviser Network



Over 90% of local mainstream schools and colleges are now part of the Enterprise Adviser Network, up from 78% at the beginning of the year.

Through our ambitious Unbox Your Future (UBYF) initiative we had a positive impact on helping teenagers not in education, employment or training think about their career choices. We sent out 1,500 UBYF toolkits, full of curated careers items, directly to some of the most disadvantaged young people in Leicester and Leicestershire.

The aim was to inspire them to start a careers conversation with a friend, parent or carer about their future pathways and open their eyes to possible careers they may not have thought about before.

During school closures we Launched 'Future Me', a six-week virtual careers programme for young people in years 9-11, with key local employers delivering live online sessions and Q&A on their industry and careers in their sector. Each week was themed on a personal skill such as self-management, creativity and team working.

1,500

Unbox Your Future careers toolkits delivered

68%

of young people spoke to a family member or friends about the resources in the box

81

mainstream schools are part of the Enterprise Adviser Network

85

Senior Business Volunteers are Enterprise Advisers, up by

37%



2020 UBYF recipient Charile

What's in the box - the Unbox Your Future contents



Supporting Recovery



Response to Redundancy Service

In April 2020, as lockdown hit Leicester and Leicestershire, the potential for redundancies for employees that could not be furloughed became a concern. In contrast, there were also large-scale employment opportunities appearing in areas such as food retail, distribution and care sectors.

In response, we facilitated a partnership with DWP, Futures (who manage the National Careers Service locally), and the Leicester Employment Hub, to work together to provide a rapid response service – matching those in redundancy situations to new opportunities and offering additional support where further employability or skills help was required.

By the end of March 2021, although local redundancies have remained low, the service had a strong and collaborative area partnership, working together to help people whatever their circumstances, to retrain, increase their skills levels, or move into growing sectors.

The service also aligns with in-depth support offered by our European Social Fund projects who can help people to move nearer to the labour market, and also support businesses with skills needs in the workplace.

World of Work Leicestershire

Our World of Work guide is a flexible and interactive programme that is shared with local school and college Careers Leader, and teachers and their students. It is packed full of labour market information about Leicester and Leicestershire employers. We also produced a version of the guide for adults, for those seeking employment or a career change.

The aim of the guides is to support, inform and inspire young people, teachers and careers advisers. We also aim to support adults seeking opportunities, and help them understand more about local industries and the careers and jobs those sectors provide.

The programme enabled us to support schools, colleges and partners throughout the pandemic with real time labour market information through World of Work Guides that feature the wide range of sector information and employment opportunities in our region.

The World of Work labour market guide for young people was completed in September 2020, and had a new page on entrepreneurship, and a focus on sectors that were less likely to be affected by the impact of Covid-19, plus employability tips.

The guide for adults was completed in March 2021 and had a focus on finding work in a challenging market, and support with retraining, lifelong learning, and employability.



23,000 **World of Work** guides for young people sent to 90 schools and colleges

23,000
Young People's
Guides



2,000
Adult
Guides

2,000 **World of Work** guides for Adults sent to 10 different partners that support adults in to work.

Labour Market and Employability Films



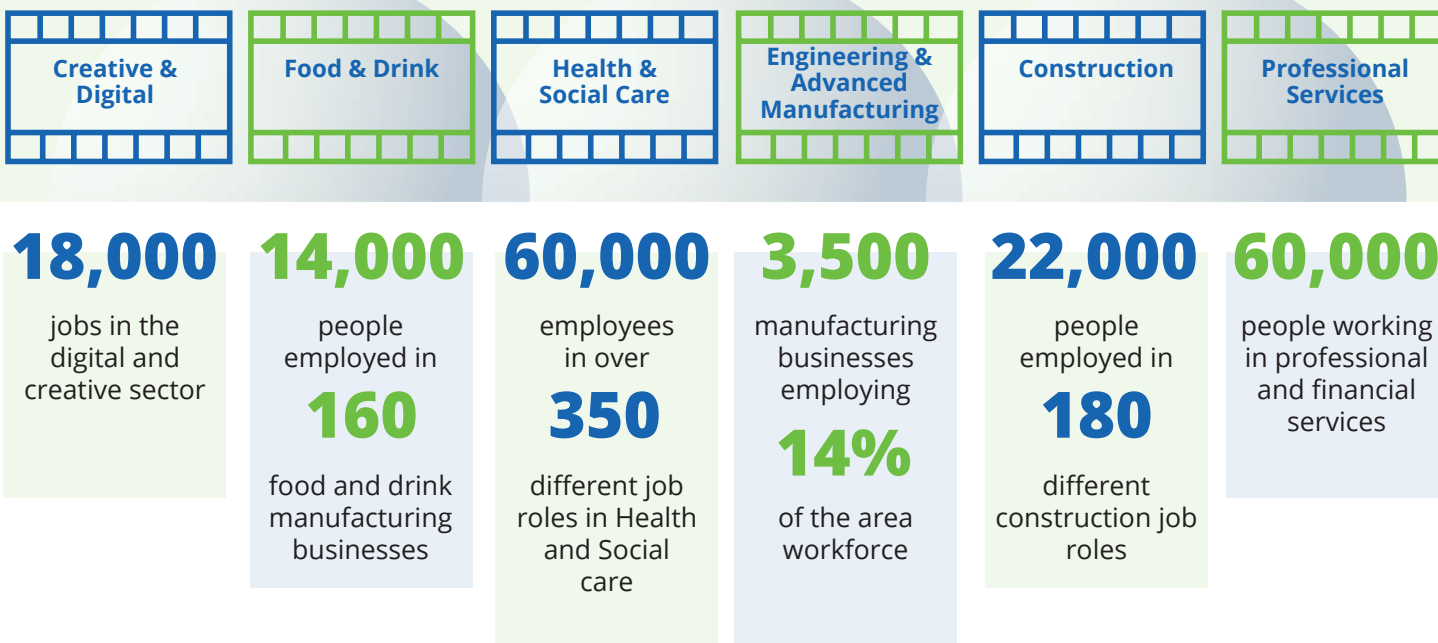
We produced a set of films for schools and colleges on key sectors, building on a pilot video on the logistics sector, which was narrated by a local young person.

An overview of the general labour market, featuring recruitment firm Macildowie, was the first film to be

completed, along with a quiz and lesson plan that education and other skills providers can use.

We launched a further series of six sector films, lesson plans, presentation and quizzes in March 2021 as part of National Careers Week 2021.

Six labour market films highlighting key sectors featuring local employers



Our Education-Business Links network also worked on a series of short films promoting employability and skills, such as preparing for virtual interviews and what is an apprenticeship.

We are also working with North West Leicestershire District Council to support skills in the East Midlands Enterprise Gateway area.

We are leading the task and finish group for resources for schools, parents, and potential employees, after mapping out the resources currently available to support young people's understanding of the logistics sector.

We will then create new resources to support 'myth busting' and encourage young people and adults into the logistics sector.

Apprenticeships



We coordinated activity with the Education and Skills Funding Agency, Leicester Employment Hub and Leicestershire County Council on a set of key initiatives to revive apprenticeships and traineeships post Covid-19, which also affected the launch of T Levels, a new level three technical option.

We promoted the T Level option to young people, including raising awareness of the 'Plan for Jobs' incentives. Following engagement with training providers, they confirmed that they would value a

LLEP-led local provider forum to share good practice, and to deliver actions and resources to raise awareness of apprenticeships, traineeships, and T Levels across Leicester and Leicestershire.

We began collating an area apprenticeship/T Levels Matrix, setting out what is delivered locally and by whom, which can be used by schools and employers. Further work to better link the apprenticeship and T Level offer to schools will follow.

Business and Economic Intelligence Updates

From April 2020 we gathered data on a monthly basis into a single intelligence report to provide a narrative and regular update so that our partners, stakeholders and businesses could keep pace with the changing economic landscape.

The intelligence update was a direct response to events that have impacted the local and national economies during the Covid-19 pandemic, and it placed a bearing on the wellbeing of business, the local workforce, and residents.

Content included information relating to research and reports, Government announcements, claimant data, furloughed employees, the Self Employment Income Support Scheme, job postings and business closures and incorporations.



Business Tracker Survey



Following a competitive tender process, we appointed an external research company to carry out a survey to monitor the fast-changing business sentiment in response to the Covid-19 pandemic over a period of 12 months. The first fieldwork period came to an end in January 2021 with 200 businesses taking part in the survey.

The survey collates the views and opinions of local businesses and helped us to understand their needs.

The focus is on business performance, export and import, environmental issues and issues related to business support.

The survey will inform future policymaking, and ensure support is appropriately targeted via the Business Gateway Growth Hub.

Key headlines:



More than three in four have made use of the furlough programme for staff members, 93% of which are small businesses.



10% of respondents state that they have accessed no support at all in the form of grants or loans.



64% of respondents had staff working from home for the first time. This figure rises to 74% for small businesses.



30% of businesses intend to allow greater flexible working options than before.



Two in three businesses had no provision for home working before the Covid-19 restrictions hit.



84% of respondents wish to some extent to grow digital technology in their business.



Nearly half of all respondents said they will look to recruit in the next six months, with only 6% expecting to make redundancies.

New LLEP Website

In December 2020 we launched a brand new LLEP website. The site was completely redesigned with the purpose of simplifying the navigation, streamlining the information and content, and creating an easier user experience to educate visitors about LLEP activities and priorities.

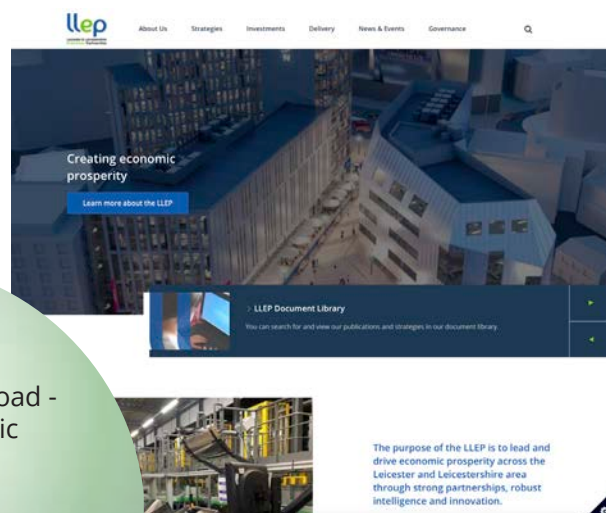


Since launching the site

31,651
users



Most popular download -
Covid-19 Economic
Recovery Plan



Governance

Following our first year as an incorporated company, we held our AGM for company members and the general public on 2 December 2020. Due to the ongoing restrictions caused by the Covid-19 pandemic we held a virtual meeting.

LLEP members voted to appoint two new private sector directors, Lorraine Boorman and Clare James. This now brings the number of directors to 19, of which 13 are from the private sector. In addition, women now make up one third of all board appointments.

Many of our boards and committees have undergone a review, with refreshed Terms of Reference for all working groups.

The Investment Panel has been established to replace the Programme Board. The LLEP board has agreed the terms of reference for an Innovation Board and Finance and Audit Committee and sought

nominations from each of the directors to sit as board representation on these groups.

The revised governance structure also includes the formation of an independent Scrutiny Committee to provide strategic overview and scrutiny of the LLEP. This committee will be formed by members of the company.

In February 2021 our Annual Performance Review was conducted with the Department for Business, Energy and Industrial Strategy (BEIS) and we satisfied all the criteria required for Governance, Strategic Impact and Delivery. This is a great outcome and we continue to progress and monitor our capital projects to ensure they achieve the agreed timescales and outputs.

As a company limited by guarantee we continue to seek applications for LLEP members and had 30 members by the end of March 2021.

Annual Accounts

2020/2021 LLEP Operating Budget

2020/2021

£000's



Income	
Grants	640
Contributions	250
National and Local Programme Income	1422
Fees, Interest and Other Income	511

Total Income	2823
---------------------	-------------

Expenditure	
Staffing	929
Running Costs	332
Accountable Body Costs	182
Programme Delivery	1307

Total Expenditure	2750
--------------------------	-------------

Net Surplus / (Deficit)	73
--------------------------------	-----------



LLEP Board of Directors



Leicester & Leicestershire
Enterprise Partnership



KEVIN HARRIS
Partner, RSM UK
Chair of the LLEP



ANDY REED
Director, Sajeimpact
Deputy Chair of the LLEP



DR NIK KOTECHA OBE
Director, Morningside
Pharmaceuticals Ltd



EMMA ANDERSON
Director, Freeths



NEIL MCGHEE
Director, Sempervox



CHAS BISHOP
CEO, National
Space Centre



JAPAL SINGH MINAS
MD, Electrical Design
and MFG Co. Ltd



ANIL MAJITHIA
Chair EM RAB, Canal and
River Trust



LARRAINE BOORMAN
Chair and CEO, Optima UK



RANI MAHAL
Director RM Kingsley



ANNA-MARIE HUNT
Director of Commercial
Banking, Natwest



SONIA BAIGENT
Director, Assist Business
Consulting Ltd



CLAIRE JAMES
MD, East Midlands Airport



PROF. ROBERT J ALLISON
Vice Chancellor & President
Loughborough University



VERITY HANCOCK
Principal and CEO,
Leicester College



CLLR TERRY RICHARDSON
Leader, Blaby
District Council



CLLR JONATHAN MORGAN
Leader, Charnwood
Borough Council



CLLR DANNY MYERS
Asst. City Mayor for jobs, skills,
policy delivery & communications



NICK RUSHTON CC
Leader, Leicestershire
County Council



Leicester & Leicestershire
Enterprise Partnership



Contact Details

To receive news and information about LLEP programmes and activities visit:

www.llep.org.uk/subscribe

If you require further information on anything within this publication, please email the LLEP at the address below.

Leicester and Leicestershire Enterprise
Partnership Limited (LLEP)
City Hall, 115 Charles Street, Leicester, LE1 1FZ



+44 (0)116 454 2917



admin@llep.org.uk



[@LLEPNews](https://twitter.com/LLEPNews)



[linkedin.com/company/llep-page](https://www.linkedin.com/company/llep-page)

